

Camspec

The M550 UV-Vis True Double Beam Scanning Spectrophotometer

This is a true double beam instrument with parallel sample and reference beams. The specification is as expected from a top-of-the-range instrument designed for research as well as routine use. The M550 conforms to all current US & European Pharmacopoeia guidelines and can be used with Camspec 21CFR Part 11 compliant Panorama PC software to meet the exacting requirements of the pharmaceutical industry.

Two silicon photodiodes are used for measuring the two beams simultaneously for optimising measurement accuracy and stability. The reference beam is especially useful for measuring samples where the reference changes with time. The M550 uses a very easy-to-replace tungsten-halogen lamp, and a pre-aligned long-life deuterium lamp.



Technical Specifications for the M550 UV/VIS Spectrophotometer

| | |
|--------------------------|---|
| Display | LED Display |
| Light sources | Tungsten-Halogen and Deuterium |
| Monochromator | Littrow type with 1200 lines/mm grating |
| Scan Speed | Up to 2500 nm/min (return 3000nm/min) |
| Detector | Silicon Photodiodes |
| Wavelength Range | 190 - 1100nm |
| Wavelength Accuracy | ± 0.3nm |
| Wavelength Resolution | 0.1nm |
| Wavelength Repeatability | ± 0.05nm |
| Baseline Flatness | ± 0.002 (After 1 Hr warm up 1100 – 200nm) |
| Zero Drift | < 0.001A per hour after warm-up |
| Noise | ± 0.0001A @ 500nm 0A |
| Bandpass | 1.5nm |
| Stray Light (A.S.T.M.) | KCl >2A at 198nm <0.05%T @ 220nm & 340nm |
| Photometric Accuracy | ± 0.5% at 0.5A, 1.0A and 2.0A |
| Photometric Range | -0.3 to 3A, 0 to 200%T, 0 to 9999 Conc |
| Printer Interface | Parallel for A4 HP and Epson printers |
| Computer Interface | USB Port |
| Power Requirements | 110/120V, 220/230V, 50/60 Hz, 110VA |
| Dimensions | 630 x 410 x 280mm packed 770 x 560 x 410 |
| Weight | 24kg packed 28Kg |

Email: sales@camspec.eu

Tel: +44 (0) 113 286 4536

www.camspec.eu

Camspec

User Interface

The user interface is almost the same as that of the popular M501 Single Beam Spectrophotometer and includes Basic Mode (Abs, %T, Conc), Quantitative (concentration calibration curves), Wavelength Scanning, Kinetics (including timedrive), DNA/Protein, Multi- wavelength, and Performance Validation. The M550 stores up to 50 methods/results. In Basic Mode, the result is continuously displayed (no need to "press to read")

PC Control

The M550 has an USB output for the transfer of results to a PC and for PC controls of the M550. Comprehensive Camspec Application Software is available, together with small PC programs, dedicated to specialist tasks.

Pharmaceutical Analysis

The M550 is European Pharmacopoeia 6.2 compliant. It passes the Potassium Chloride stray light test, the Toluene in Hexane resolution test, the Holmium Perchlorate solution wavelength test and the Potassium Dichromate absorbance test. The M550 may be controlled by Camspec Panorama software which is 21 CFR Part 11 compliant. This means that it can be used for pharmaceutical analysis requiring FDA (Food and Drug Administration) approval.

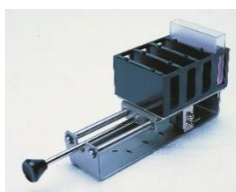
A selection of the many Cell Compartment Accessories available

Micro cell holder



Peltier / sipper

0-50 mm 4 x cell
Manual



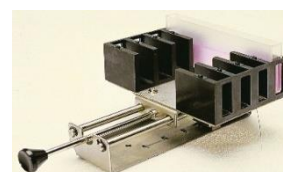
6 cell auto changer

Test tube



8 cell auto changer

0-100 mm 4 x cell
Manual changer



Thermostatted Single
Cell holder



Email: sales@camspec.eu

Tel: +44 (0) 113 286 4536

www.camspec.eu